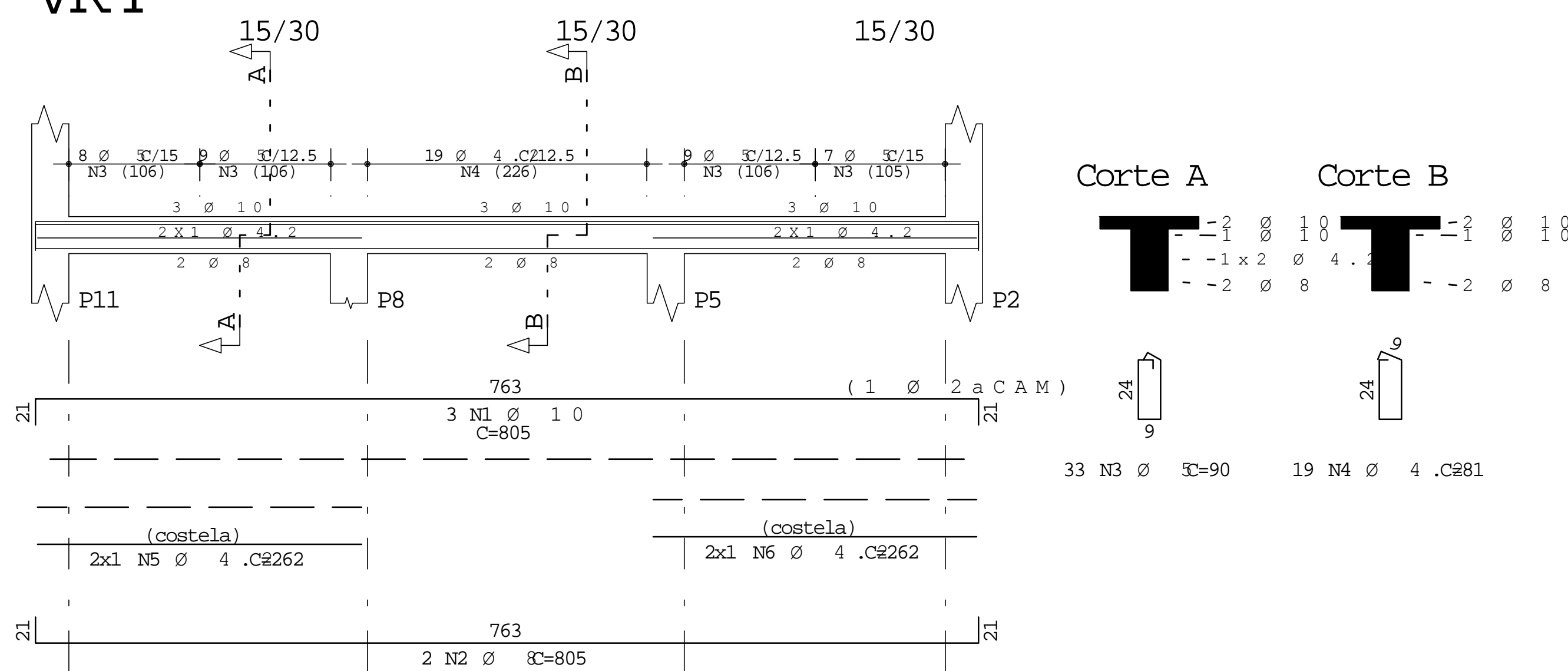
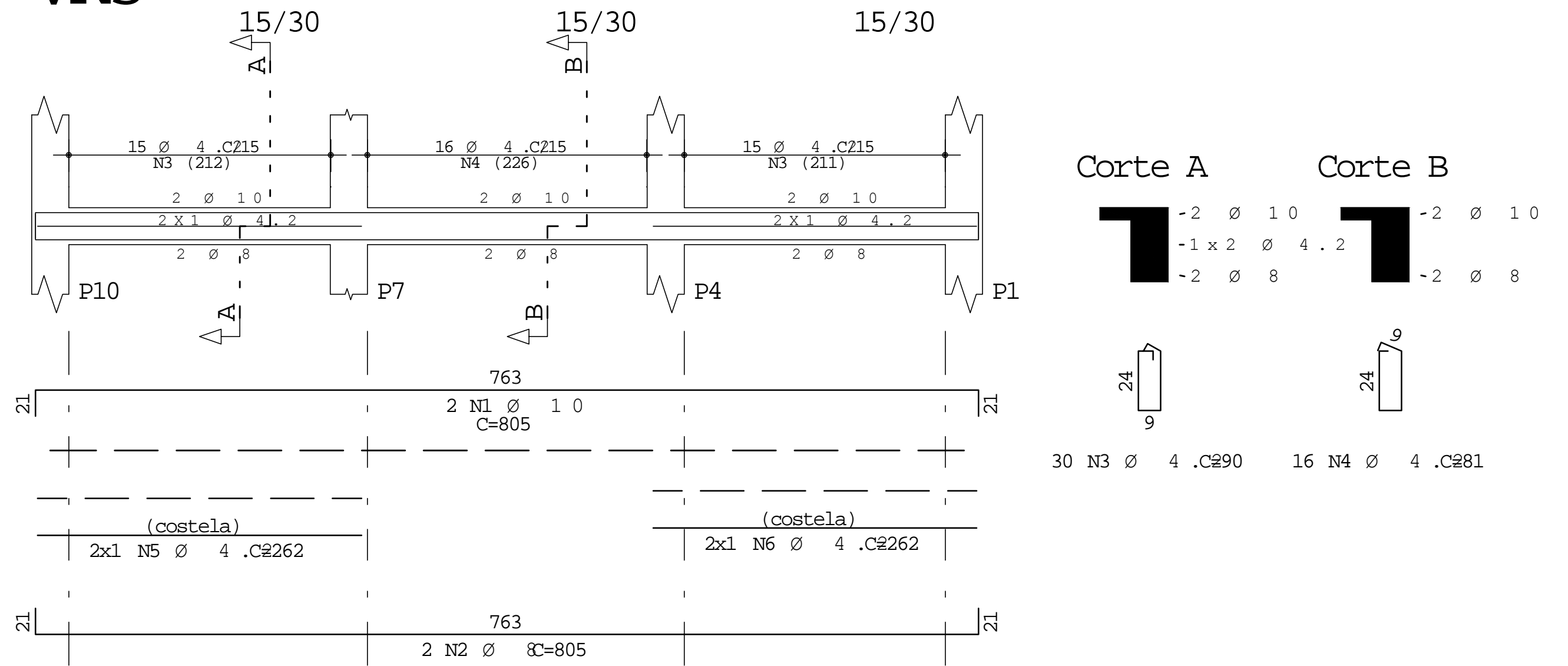


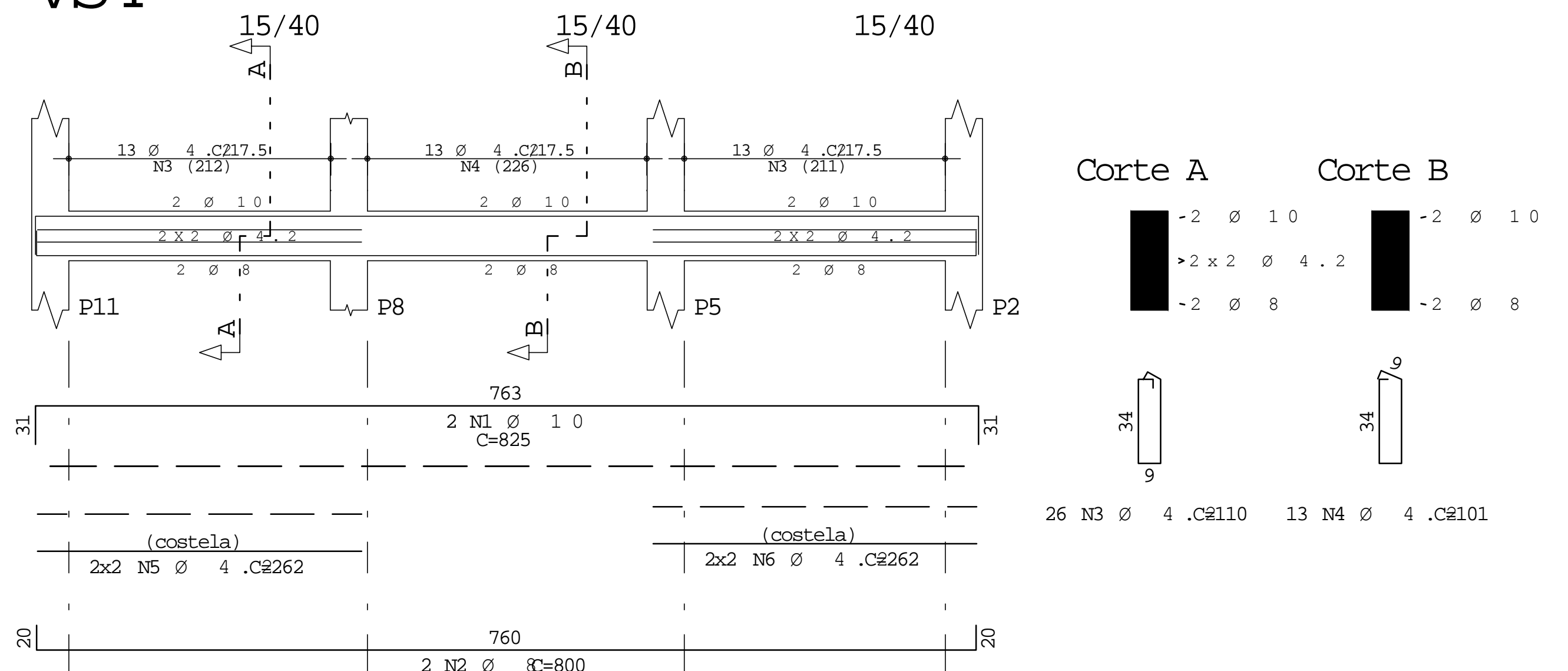
## VR4



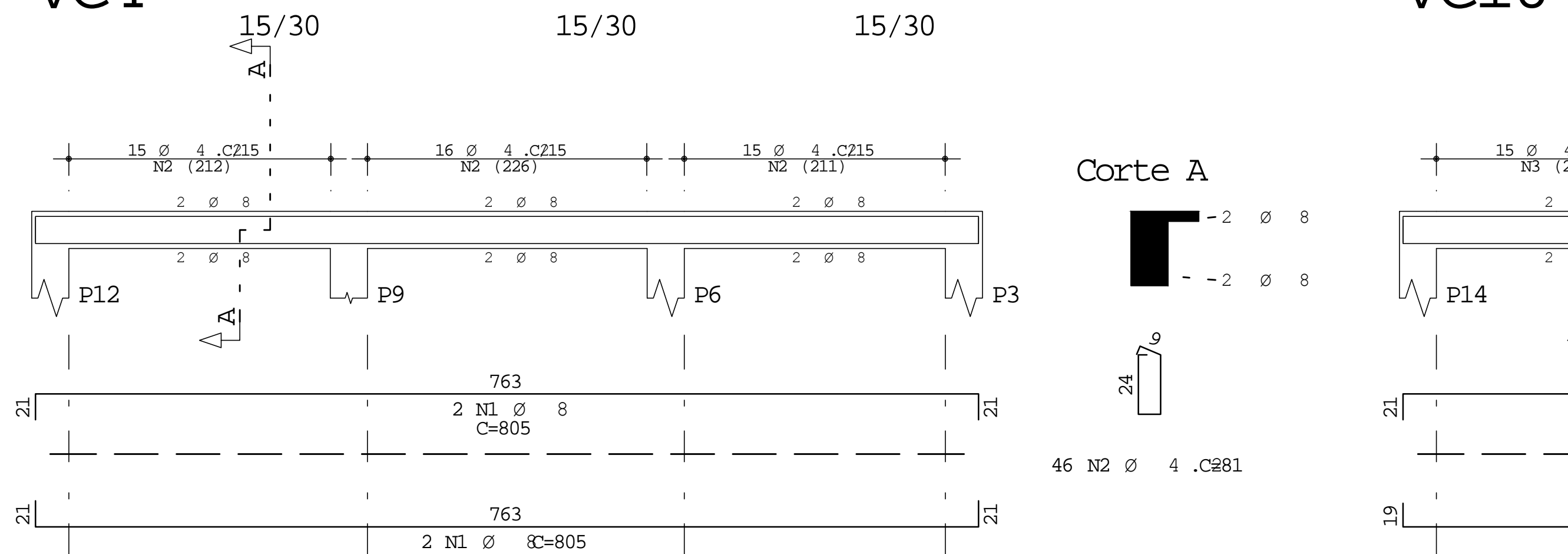
## VR3



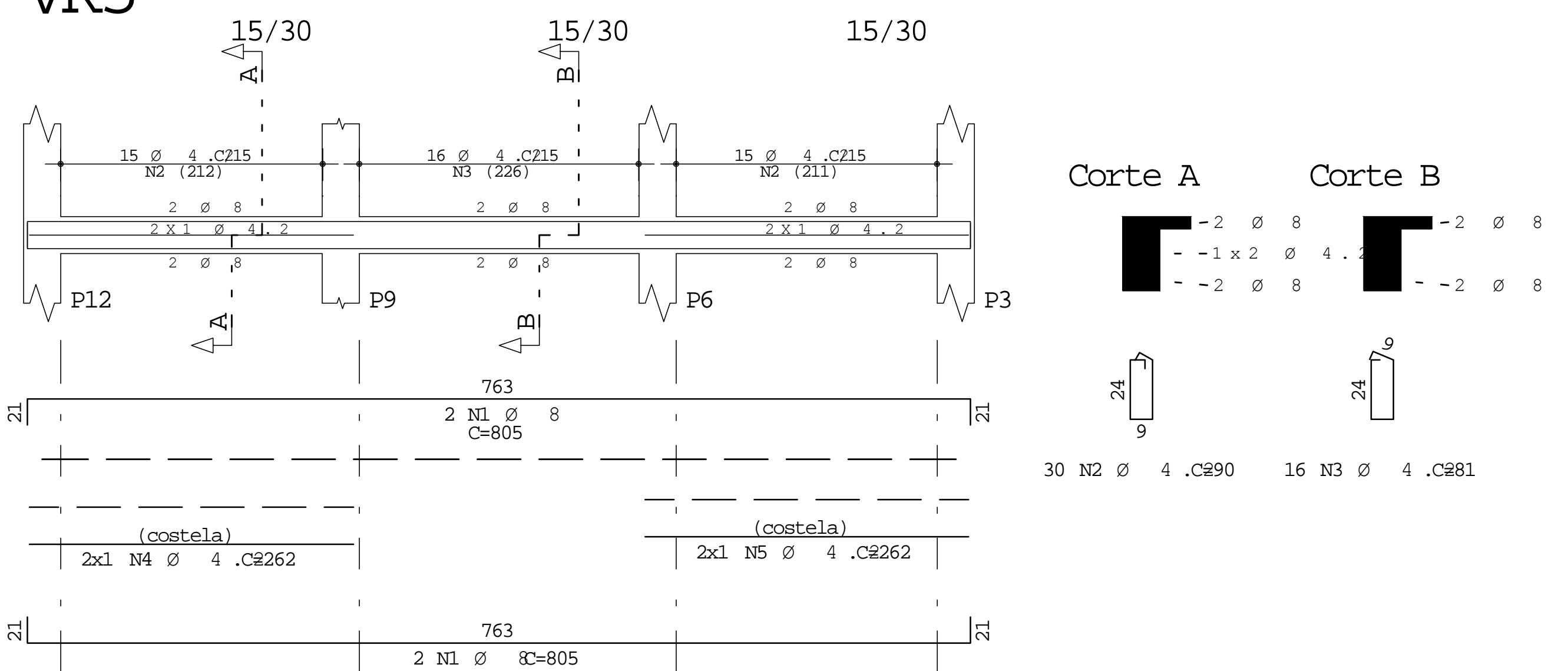
## VS4



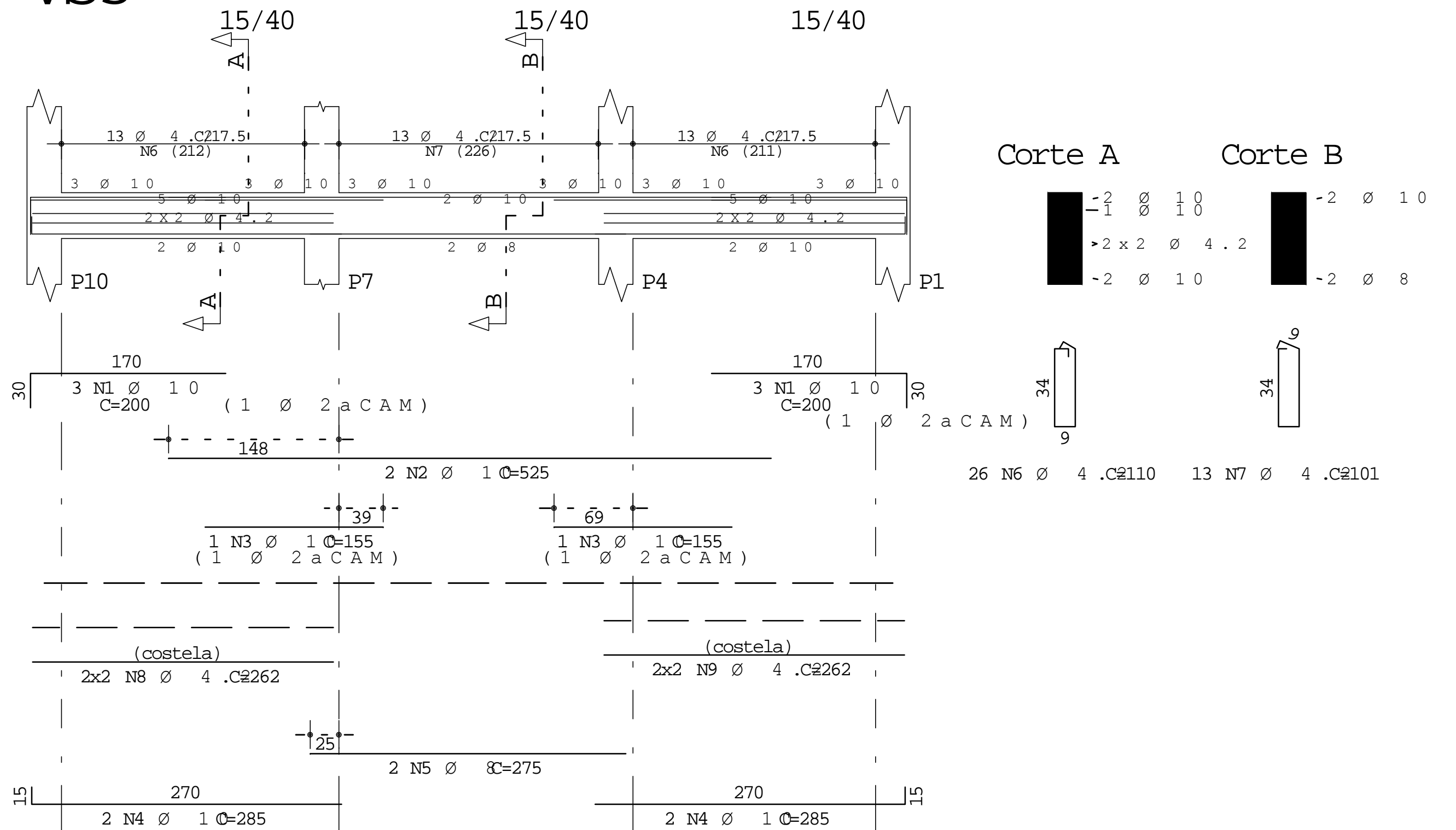
## VC4



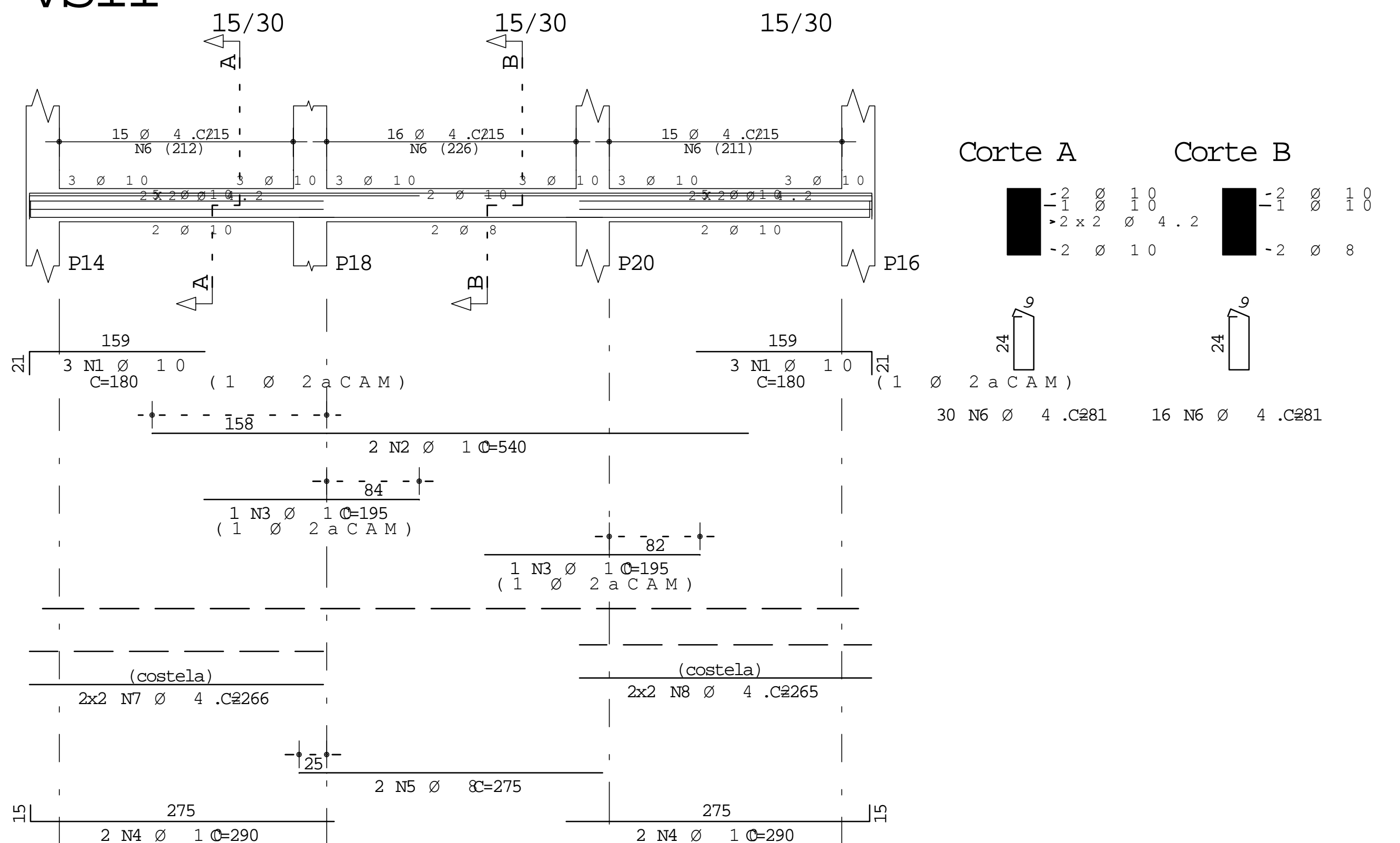
## VR5



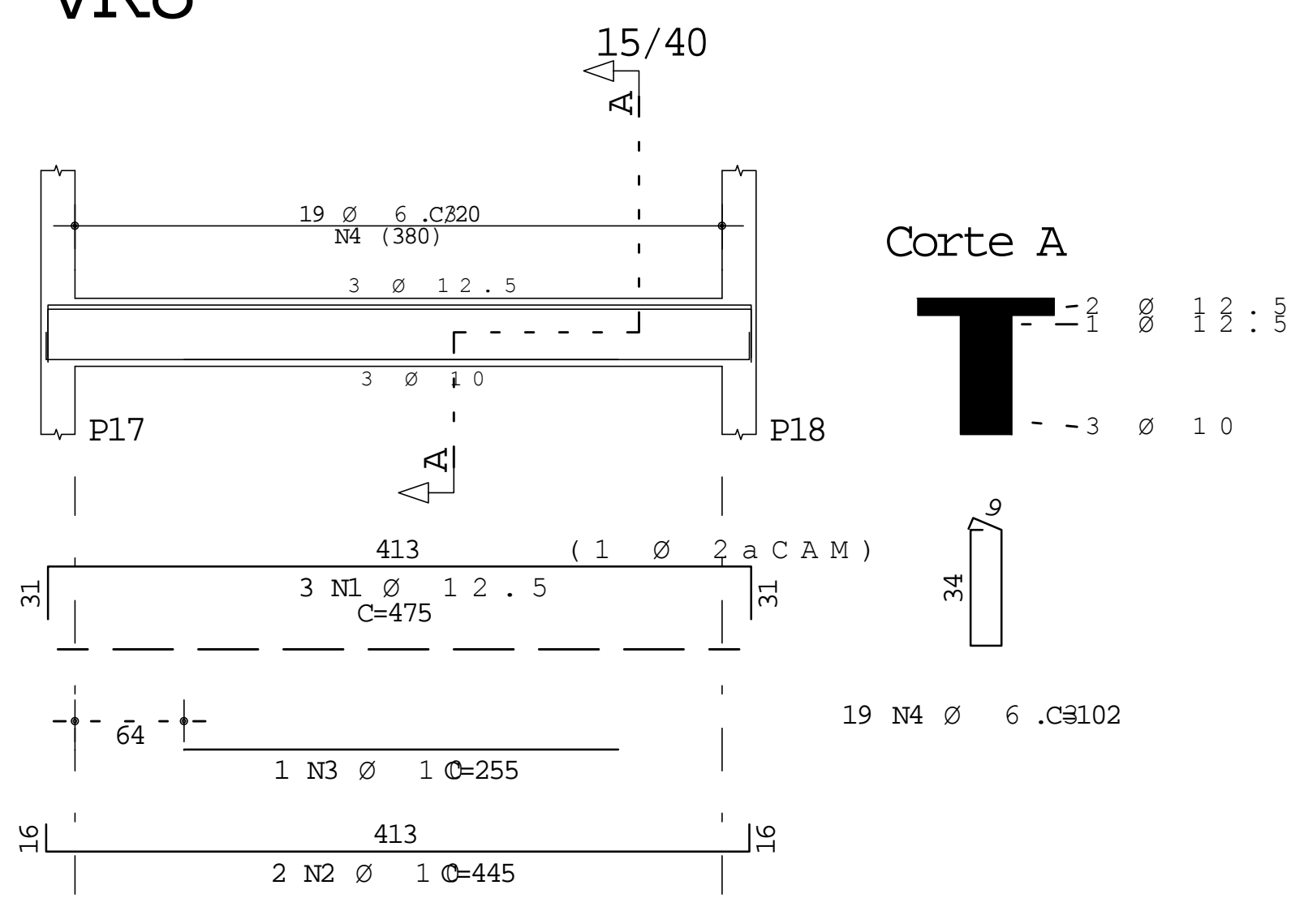
## VS3



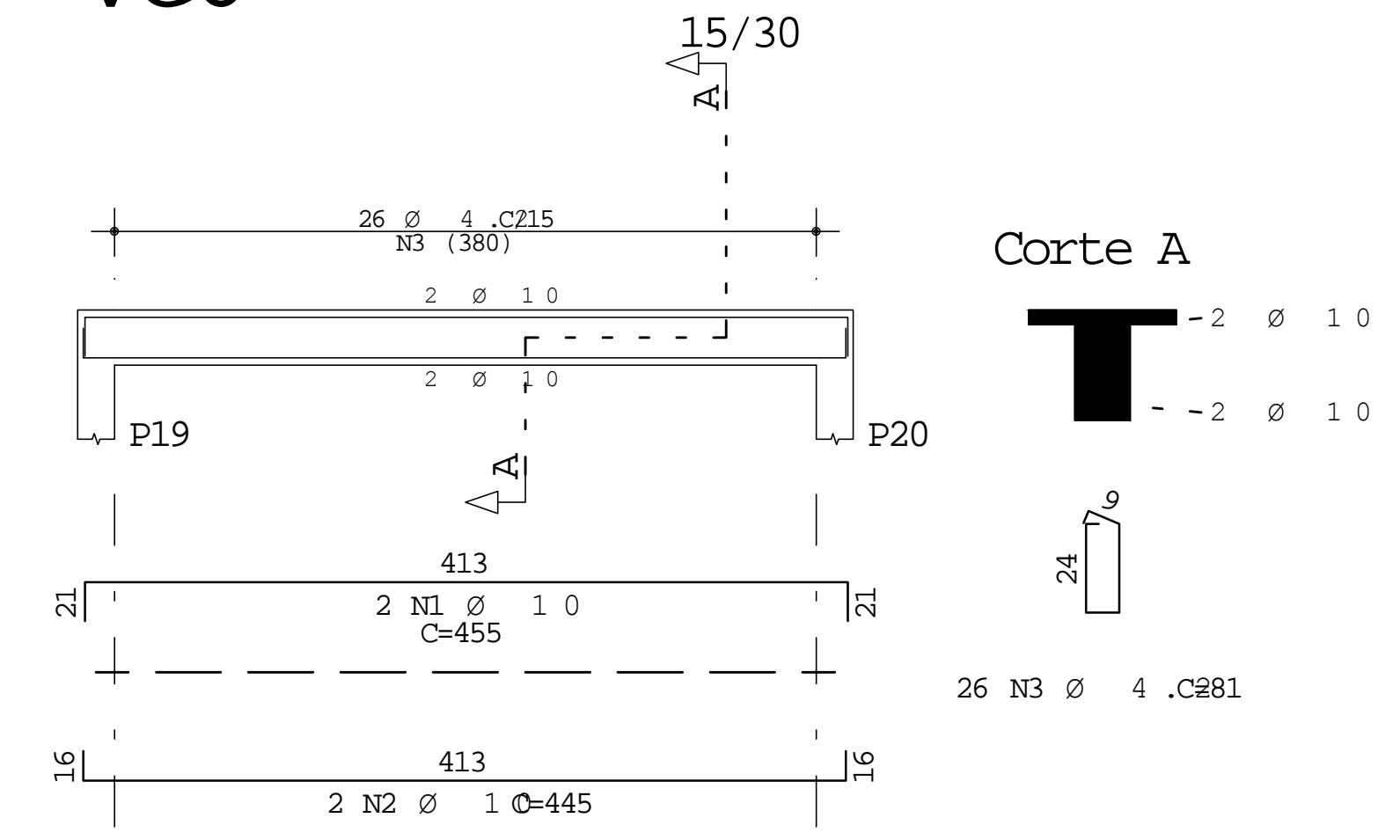
## VS11



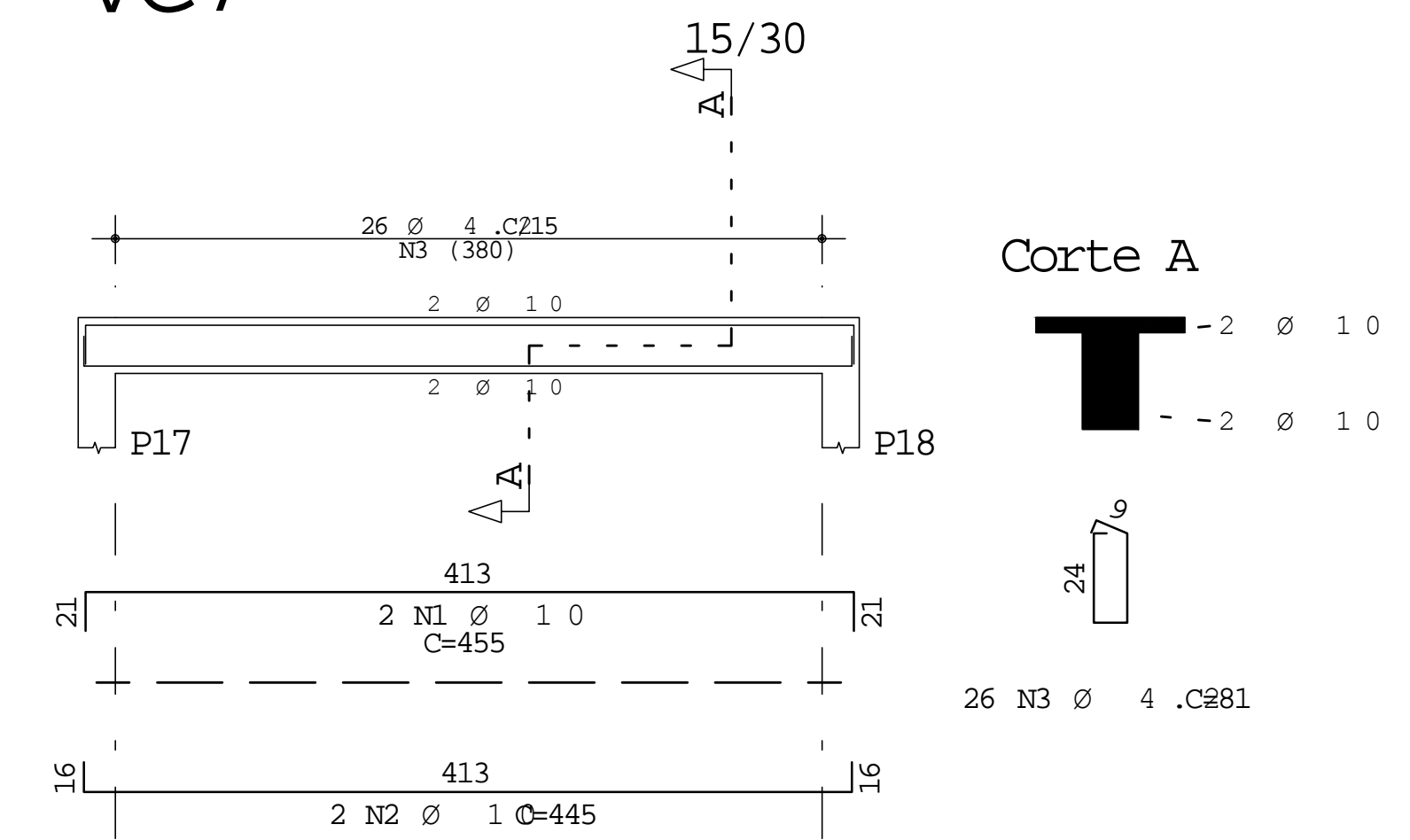
## VR8



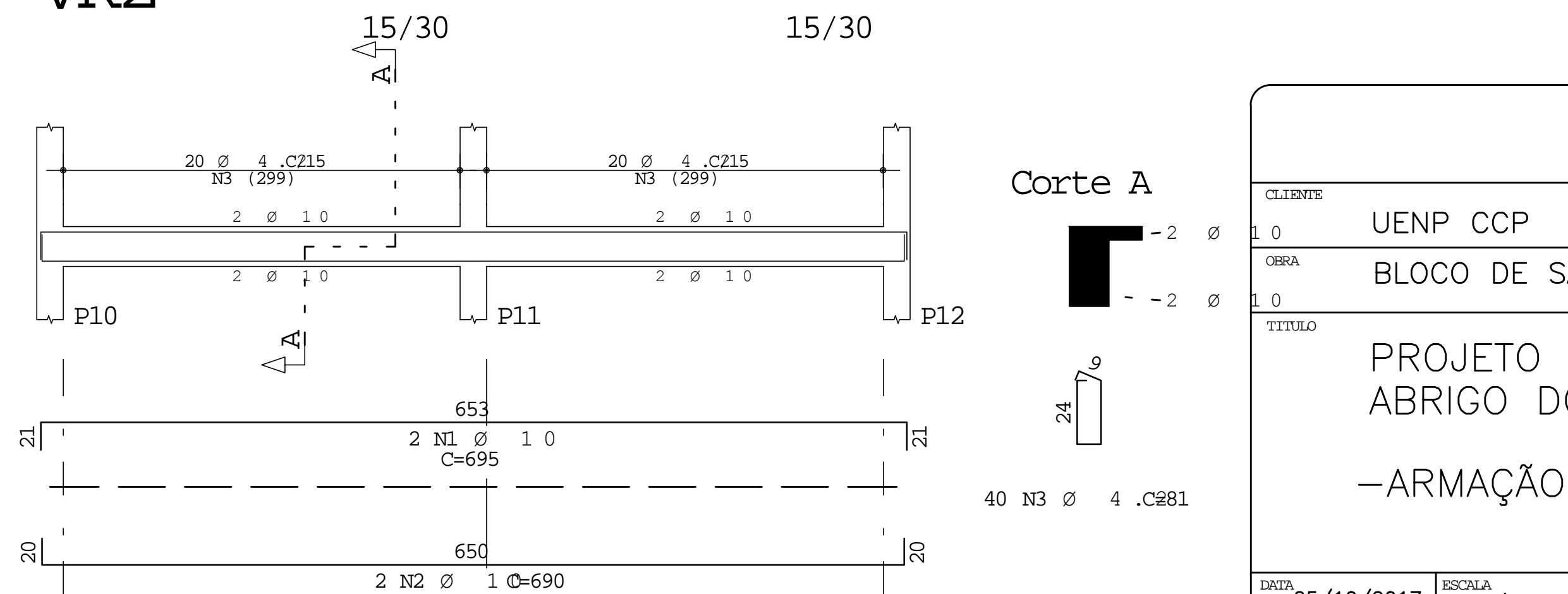
## VC6



## VC7



## VR2



	A	C	D	POS	BIT (nm)	QUANT	UNIT	
							UNIT (cm)	TOTAL (cm)
VC4		50A	1	2	8	4	805	3220
		60B		1	4, 2	46	81	3726
VC6		50A	1	10	2	2	465	910
		50A	2	10	2	2	445	890
		60B	3	4, 2	26	81	2106	
VC7		50A	1	10	2	2	455	910
		50A	2	10	2	2	445	890
		60B	3	4, 2	26	81	81	2106
VC10		50A	1	8	2	2	805	1610
		50A	2	8	2	2	800	1600
		60B	3	4, 2	46	81	81	3726
VR2		50A	1	10	2	2	695	1390
		50A	2	10	2	2	690	1380
		60B	3	4, 2	40	81	81	3240
VR3		50A	1	10	2	2	805	1610
		50A	2	8	2	2	805	1610
		60B	3	4, 2	30	90	90	2700
		60B	4	4, 2	16	81	81	1296
		60B	5	4, 2	2	262	262	524
		60B	6	4, 2	2	262	262	524
VR4		50A	1	10	2	2	805	2415
		50A	2	8	2	2	805	1610
		60B	3	5	33	90	90	2970
		60B	4	4, 2	19	81	1539	81
		60B	5	4, 2	2	262	262	524
		60B	6	4, 2	2	262	262	524
VR5		50A	1	8	4	2	805	3220
		60B	2	4, 2	30	90	2700	
		60B	3	4, 2	16	81	81	1296
		60B	4	4, 2	2	262	262	524
		60B	5	4, 2	2	262	262	524
		60B	6	4, 2	2	262	262	524
VR8		50A	1	12, 5	3	475	1425	
		50A	2	10	2	2	445	890
		50A	3	10	2	2	255	255
		50A	4	6, 3	19	102	102	1938
VS3		50A	1	10	6	200	1200	
		50A	2	10	2	525	1050	
		50A	3	10	2	155	310	
		50A	4	10	4	285	1140	
		50A	5	8	2	275	550	
		60B	6	4, 2	26	110	1860	
		60B	7	4, 2	13	101	1313	
		60B	8	4, 2	4	262	1048	
VS4		50A	1	10	2	825	1650	
		50A	2	8	2	800	1600	
		60B	3	4, 2	26	110	2860	
		60B	4	4, 2	13	101	1313	
		50B	5	4, 2	4	262	1048	
		60B	6	4, 2	4	262	1048	
VS11		50A	1	10	6	180	1080	
		50A	2	10	2	590	1080	
		50A	3	10	2	195	390	
		50A	4	10	4	290	1160	
		50A	5	8	2	275	550	
		60B	6	4, 2	46	81	3726	
		60B	7	4, 2	4	266	1064	
		60B	8	4, 2	4	265	1050	

RESUMO AÇO CA 50 - 6				
AÇO	BIT (mm)	COMPR (m)	PESO (kg)	
60B	4.2	460	50	
60B	5	30	5	
50A	6.3	19	5	
50A	8	156	62	
50A	10	206	127	
50A	12.5	14	14	
Peso Total	60B =		55 kg	
Peso Total	50A =		207 kg	

					CEBA N.º
CLIENTE UENP CCP					DES. N.º
OBRA BLOCO DE SALAS					04/07
BIOLOGIA/GEOGRAFIA/MATEMÁTICA/PÓS-GRADUAÇÃO					
TÍTULO PROJETO ESTRUTURAL ABRIGO DOS RESERVATÓRIOS  —ARMAÇÃO: VIGAS					REV. N.º
DATA 25/10/2017	ESCALA 1/50	FOZ 25 MPA	DESENHO	VISIMP.	SEN.º LINCOLN